





16. Aurel to Rabaste

Aurel

A nice and easy hike for any season. The path follows the valley bottom under the cover of trees. Discover the ideal conditions and environment for the Sault Truffle on the limestone plateau of Aurel.

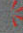


TYPE Loop
LEVEL Family
DURATION 2h30
DISTANCE 6.5 Km
HEIGHT VARIATION (+ / -) 200 m

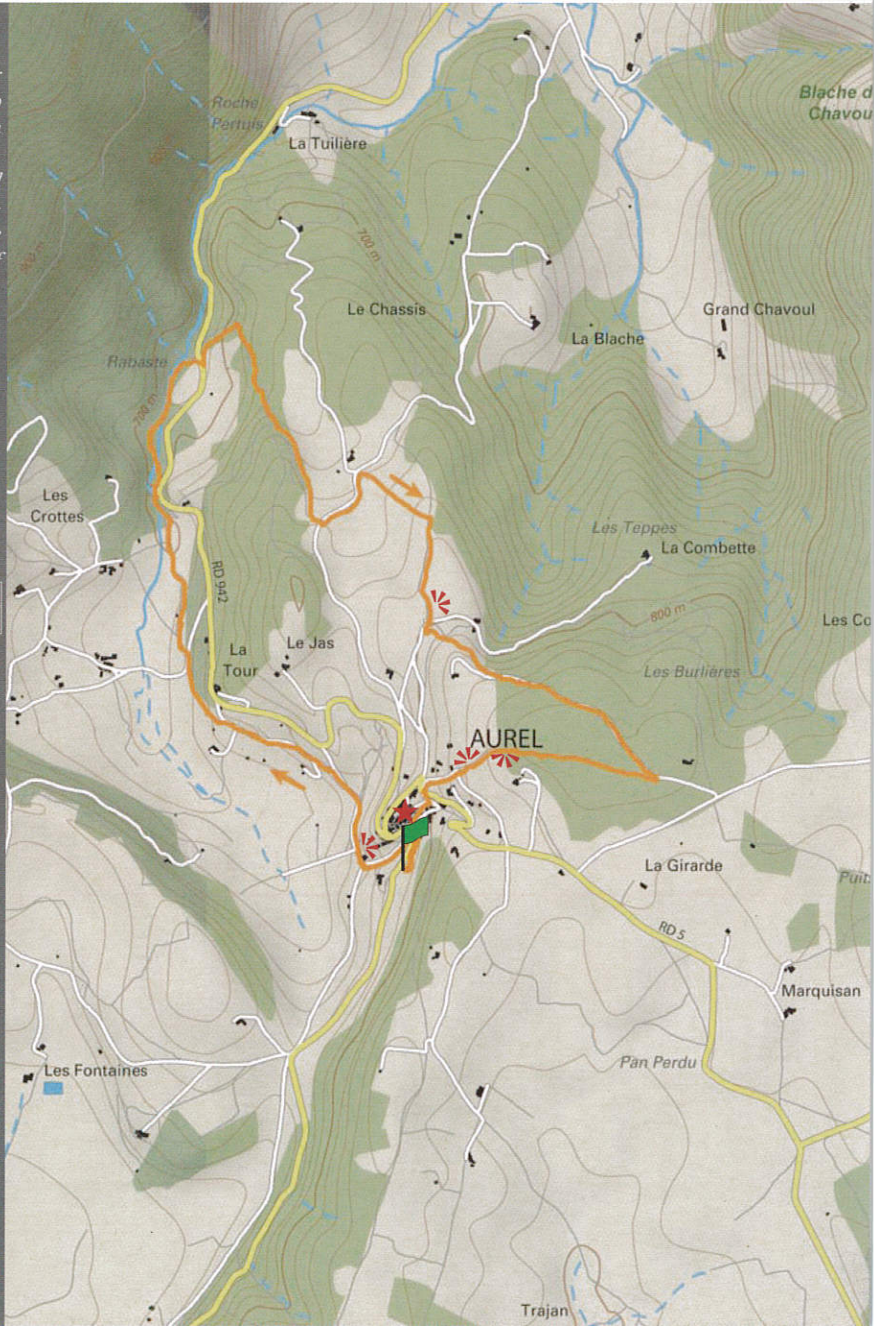
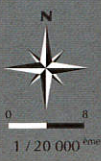
SIGNS USED

PR 


START POINT AUREL
 Town hall car park at the village entrance.
 GPS : N44 07 42.0 25 39.2 E5



View Point 
Curiosity 
Departure 



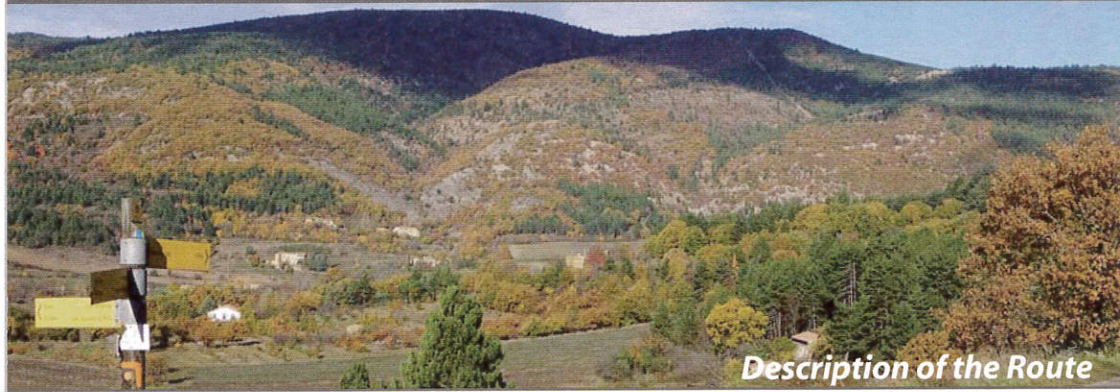
Restanque (Dry stone terracing) : This is a wall made of dry stone that support the soil of a cultivated terrace.

There is a great diversity of natural environments: Oak forests, Pine forests (Scots pine and Black pine), wetlands colonized by reeds, an intermittent stream (which does not flow in summer) bordered by Aspen, and the limestone plateau covered with oak trees, where you'll find the Sault Truffle ...

Truffles: Oak trees, where truffles grow, are cultivated within the commune. They produce black truffles which are collected at the start of winter.

Castle: the hidden dungeon of Aurel dates back to the 12th century.

Castrum Aurelli: This was the original name of the village when it was created in 1178.



Description of the Route

Depart from the car park at Aurel's Town Hall. Start from Aurel Town Hall car park. Arriving from Sault, the car park is just before the entrance to the village, on the right hand side. There are information panels on the nature trails of Hameau des Crottes and on hiking and mountain bike routes. You will also find toilets facilities. Head in the direction of the village. At the hiking post "Fontaine d'Aurel" follow the yellow signs towards "Sous le village." You will pass in front of the communal washhouse.

At the next junction turn right. At the signpost "Sous le village», go straight on. Leave the road to follow the stone path in front to the left, marked with yellow signs.

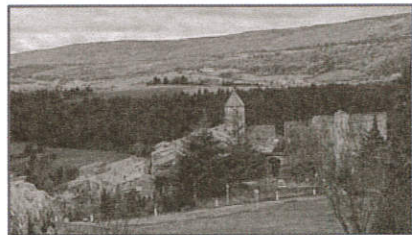
Follow this path and continue to the next crossroads (very close) and then turn left. After a short descent, follow the yellow marker on the tree indicating you to turn right. You are now on a little path and pass next to a house with a basin (on your left).

Arriving at "Les Granges" take the left to "Rabaste". The path follows the banks of a stream, which is often dried up. Take care on the slippery wooden bridge.

At the sign "Sentier Botanique", continue straight on. You cross a clearing. Look for the yellow marker on the Black Pine. Once at "Rabaste", cross the D942 road and take the path up to the left towards "Le Châssis".

At the limestone block, turn right. At this point in the black pine forest, the trail is not easy to identify. You have to head upwards until you find the yellow marker on a tree.

On arriving at "Le Châssis", take the left to "Aurel" and "Route de Montbrun". At the next junction, turn left. You no longer follow the yellow signs. At the crossroads where there is a house with a pool, take the path on the right that heads upwards. It is lined with stones that mark out individual fields. At the next intersection, turn right and follow the GR-91C. At the "Cimetière d'Aurel" go around the post and head towards "Les Burlières" (yellow markers).



Follow the path around to the left and then to the right up to the chain barrier. When you reach the next path, leaving the building to your right behind you, head up this path.

At "Les Burlières" follow "Aurel" to the right. The path passes through a field of oak trees, where truffles grow. Above the village, head towards the church. Cross the road, turn left (towards the centre of the village), and take the steps down to the lower part of Aurel. Then take the first left. At the square with the fountain you will find the original route to take you back to the car park.

