



# 3. La Togne

## Blauvac

*A great day's bike that starts in the centre of Blauvac and goes as far as the 'Mourre de Gacholle'.*

**TYPE** loop

**LEVEL** Seasoned hill-walker

**DURATION** 4h30

**DISTANCE** 12.3 Km

**HEIGHT** 450 m

**VARIATION (+ / -)**

**SIGNS USED**



**START POINT** BLAUVAC  
the church car park  
GPS : N44 01 47.0 E5 11 58.5



**View Point**



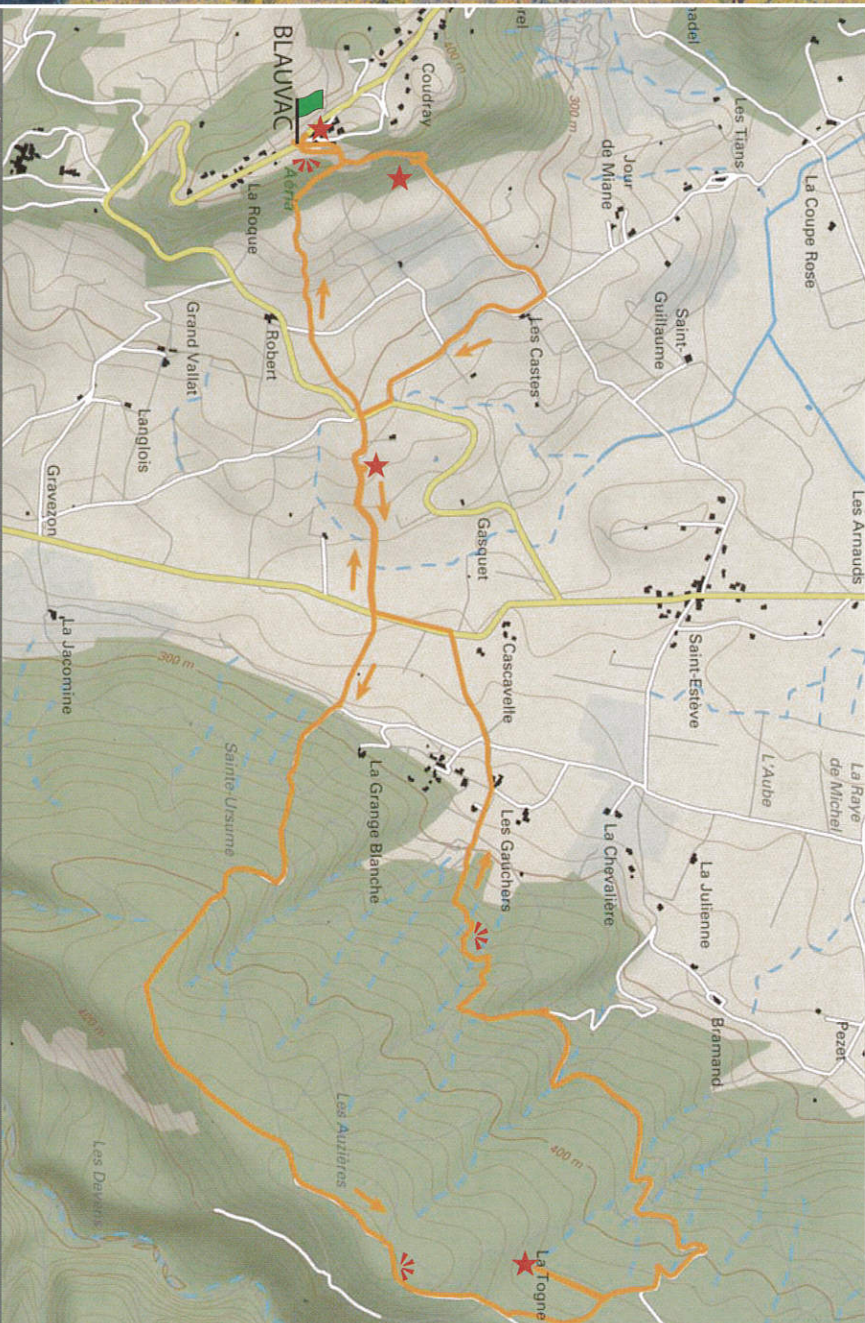
**Curiosity**



**Departure**



1 / 20 000 <sup>graph</sup>



**Panorama:** from Blauvac, the views of the surrounding Ventoux countryside are simply sublime.

**Patrimony :** during the walk, in the shade of the oak trees, there is a lovely fountain spring visible.

**Notre-Dame des Neiges:** On the east side of the village is the Roman chapel Notre-Dame des Neiges. A pilgrimage takes place every year in August.

**Lime Kiln:** this is where slaked lime was manufactured, which is produced by the calcination of limestone at over 900 °C.



## Description of the route

Start from the car park at the church, in front of the war memorial. Take the alleyway behind the church (signposted "Circuit de randonnée Notre Dame des Neiges"). Follow the yellow markers indicating the 'PR' (Petite Randonnée) and the orange markers indicating the off road cycle route (VTT). At the hiking post 'Bosquets', take the left towards "Les Castes". Once you have passed through the twists and turns on the route, head through the vineyards. At the hiking post 'Les Castes' take the direction 'Villes-sur-Auzon - Notre Dame des Neiges'.

At the stop sign, turn right. At the hiking post 'Notre Dame des Neiges' head towards 'Villes-sur-Auzon - Grand Vallat'. At the hiking post 'Grand Vallat', head straight on towards 'Le Grand Corps'.



At the cross, head straight on and start climbing up towards the 'Mourre de Gacholle'. Follow the yellow markers. At the



hiking post 'Les Grand Corps' head towards 'Villes-sur-Auzon - La Togne'. A track appears on the left that if you take will allow you to explore La Togne and its ancient lime kiln (in ruins). Retrace your steps to pick up the original route.

At the hiking post 'La Togne' head towards 'Blauvac - Cascavelle' (yellow and orange markers). On a right hand bend, leave the track you are on and take the path indicated with yellow markers. Be sure to follow the yellow markers of the PR. You will eventually arrive on a larger track. Continue on this, heading down to the hamlet. You will arrive at the departmental road, the D14. At the hiking post 'Cascavelle' take the left towards 'Blauvac - Grand Vallat'. At the hiking post 'Grand Vallat', head up towards Blauvac. After having passed the chapel,

when you arrive at the signpost for 'Notre Dame des Neiges' go straight on towards 'Blauvac - Les Castes'. Cross over the road. After the blue water hydrant, head slightly to the left following along the side of the cherry orchard. When the path splits, follow the yellow and orange markers opposite. At the hiking post 'Bosquets', take the left towards the centre of the village and return to the starting point.